

Contact us:

Office of Federal Programs
1502 Spruce Avenue
Wilmington, Delaware 19805
302.552.3772
Jennifer.Jeanes@redclay.k12.de.us

www.redclayschools.com

**Remember:
You have a
right to know!**

**SCHOOL.
FAMILY.
COMMUNITY.**

RED CLAY SCHOOLS – TITLE I

Parent Checklist

- Received or was informed on where I can review the district and school level FACE policies?
- Received or was informed on where I can find the district federal programs complaint forms.
- Was informed on where I can find the district federal programs complaint forms.
- Signed school/parent compact.
- Attended FACE events offered.
- Understand I have a right to be involved!



**“A Student is not a
container you have to
fill, but a torch you
have to light up”**

~ Albert Einstein



Does my child attend a Title I school?

- A.I. Middle School
- Baltz Elem.
- Forest Oak Elem.
- Highlands Elem.
- Lewis Dual Lang.
- Marbrook Elem.
- Mote Elem.
- Richardson Park Elem.
- Richey Elem.
- Shortlidge Acad.
- Skyline Middle
- Stanton Middle
- Warner Elem.

What is Title I?

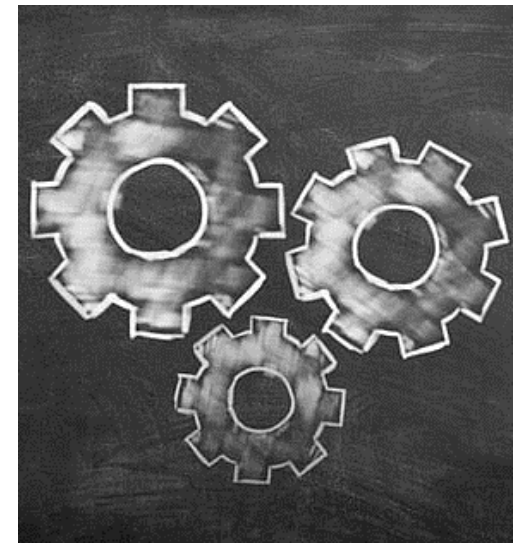
Title I, Part A (Title I) of the Elementary and Secondary Education Act, as amended by the Every Student Succeeds Act (ESEA) provides financial assistance to local educational agencies (LEAs) and schools with high numbers or high percentages of children from low-income families to help ensure that all children meet challenging state academic standards.

(<https://www2.ed.gov/programs/titleiparta/index.html>)

What is FACE?

We refer to Family and Community Engagement as FACE. Each Title I school has funds to spend on FACE efforts for each school year.

You have a right to ask your school about how they are spent. Usually, they are used to support events such as Math night, Literacy night, etc.



Why do Title I funds matter?

Today, high school graduation rates are at all-time highs. Dropout rates are at historic lows. And more students are going to college than ever before. These achievements provide a firm foundation for further work to expand educational opportunity and improve student outcomes under ESSA.

(<https://www2.ed.gov/policy/elsec/leg/essa/index.html>)

Where can I find the district FACE policy?

Check it out on our website at <https://de01903704.schoolwires.net/Page/589>.

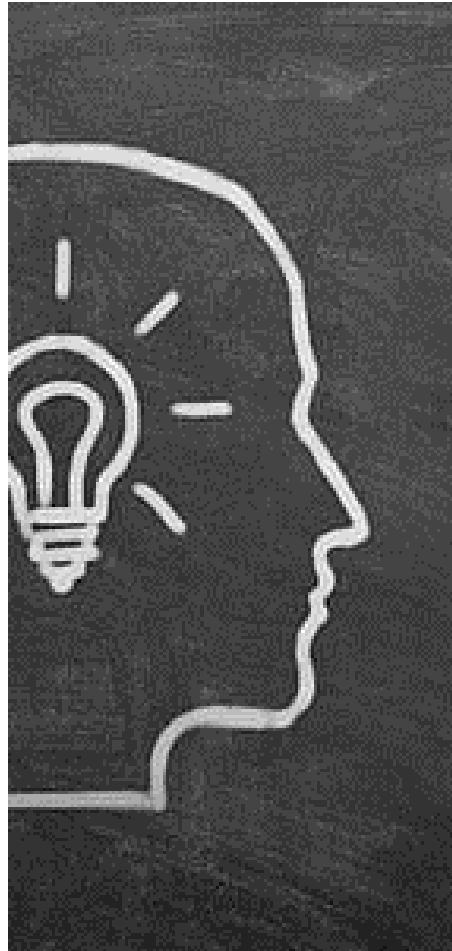
How are Title I funds being used?

Funds are dependent upon low-income rates and performance data across the State. You can review this information on the Delaware Report Card site.



RED CLAY CONSOLIDATED SCHOOL DISTRICT
ADMINISTRATIVE MEMORANDUM

PARENTAL INVOLVEMENT | 9002.01



Where can I find more information about my schools' Title I plans?

Each Title I school should have a Title I parent communication center, usually in the main office. Each school should have their Title I plans and information provided on their school website for you to easily access.

